




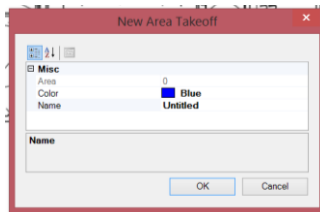
Beginner Series-Lesson 5

How to use the Area, Linear, Segment, and Count tools in Precision Plan Pro.

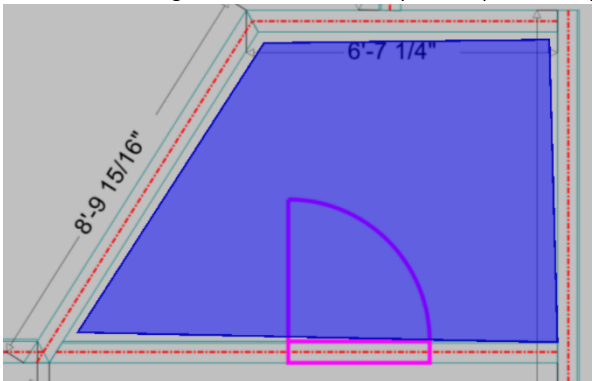
Perform an Area, Linear, Segment, and count Take-Off

Area Takeoff

- 1) Selecting the 'Area' takeoff tool  will display the Area Take-Off Dialog Box.
- 2) Click OK, and begin performing the area Takeoff.



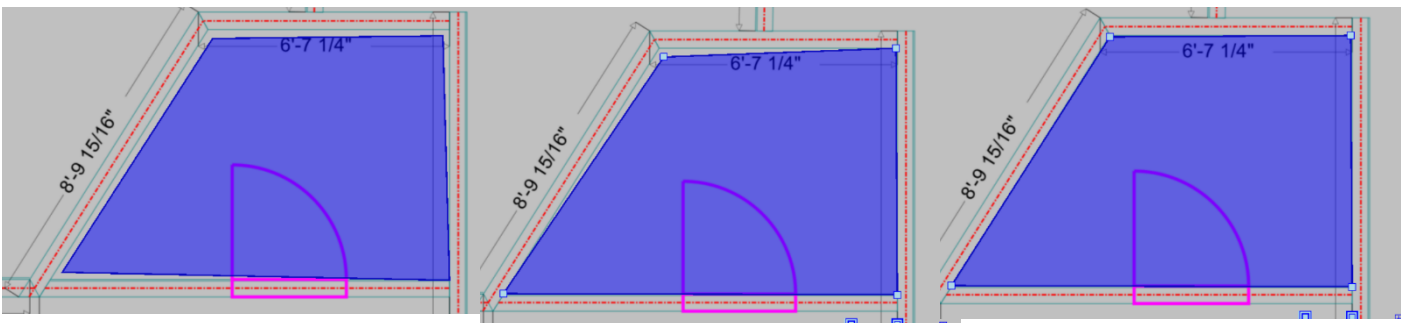
* The takeoff tracing lines will be visible after you have plotted two points when using the Area Takeoff Tool




- 3) To complete the Takeoff and 'keep' it, press the Enter Key

Adjusting the points of a Take-off

All takeoff tools can be adjusted for better precision after the Takeoff has been performed. Therefore, it is not necessary to meticulously place the corner points while performing the takeoff.

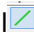


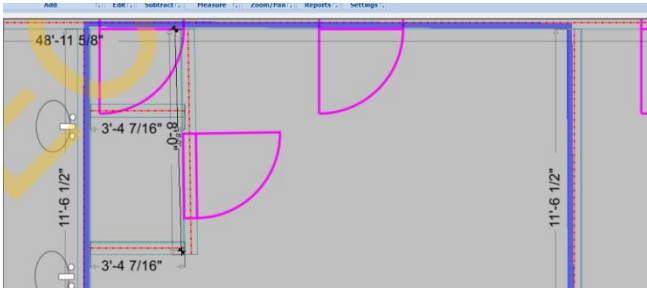
- 1) Choose the Select Takeoff tool  and select the Area Takeoff you have just created. You can now single click the square, blue 'nodes' and freely re-adjust them to the exact placement desired, clicking again will re-adjust the node. (Shown above)



Beginner Series-Lesson 5


Linear Takeoff

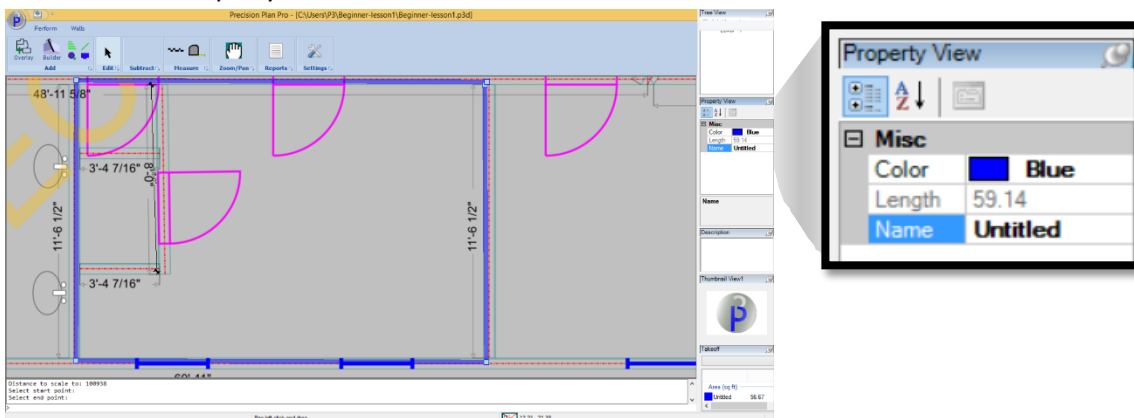
- 1) Selecting the 'Linear' tool  will display the Linear Take-Off Dialog Box.
- 2) Click OK, and begin performing the Linear Takeoff.



- 3) To complete the Takeoff and 'keep' it, press the Enter Key

Editing a Takeoff Property in 'Properties View'

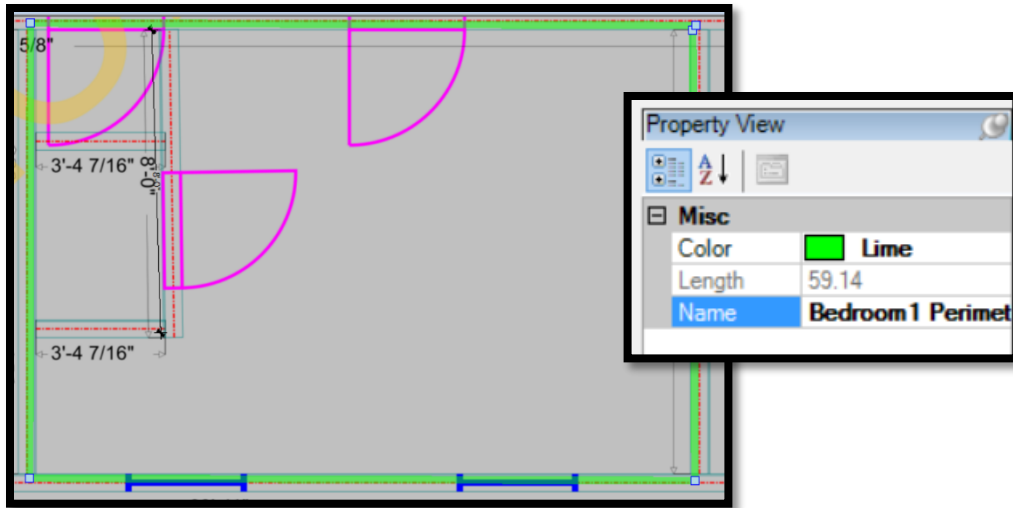
- 1) Choose the Select Takeoff tool  and select the Linear Takeoff you have just traced.
- 2) Selecting a takeoff displays the editable nodes as well as that Takeoffs properties' in the 'Property View Panel'




- 3) In properties view, you can edit the Color, or Name of a selected Takeoff by clicking the color name or Title text.

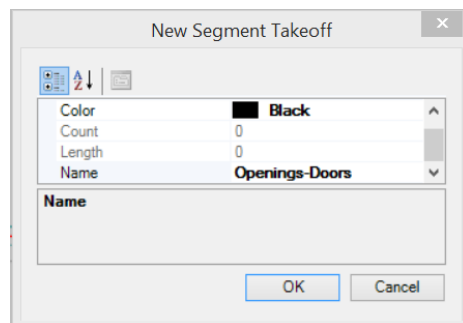


Beginner Series-Lesson 5

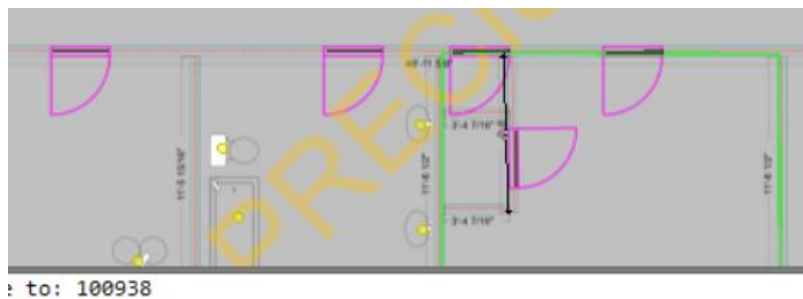


Segment Takeoff

- 1) Selecting the 'Segment' tool  will display the Segment Take-Off Dialog Box.
- 2) You can also choose to set the color or name in the New Takeoff dialog box before performing a takeoff.



- 3) After setting properties, Click OK, and begin performing the Segment Takeoff.




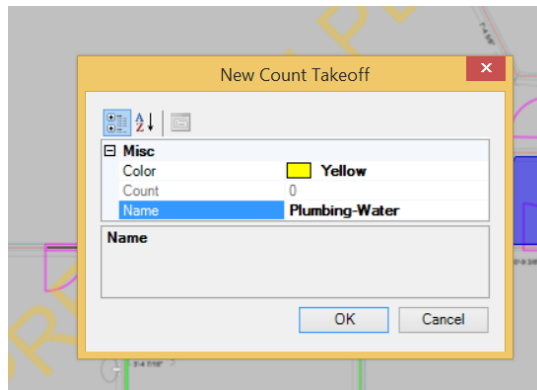
- 4) To complete the Takeoff and 'keep' it, press the Enter Key



Beginner Series-Lesson 5

Count Takeoff

- 1) Selecting the 'Count' tool  will display the count Take-Off Dialog Box.
- 2) Choose a color, and a Title, Click OK



- 3) The count Takeoff simply places a marker on an object (typically similar objects) and 'counts' the amount.



- 4) To complete the Takeoff and 'keep' it, press the Enter Key

Viewing all Takeoffs in the Takeoff Panel

Takeoff Panel is located on the right side of the Application window, displaying Takeoffs properties without the need to select them individually

- 1) After pressing enter, you will notice that the Takeoff Panel to the right, has been updated.

